

Elementary Boundary Description

Holland Landing Public School

North:

- From the intersection of the centre line of Bathurst Street and the north end of Lot 108
- East along the north end of Lot 108 crossing Holland Landing Road, Toll Road (including 10 & 11 Toll Road), Olive Street (including 96 & 99 Olive Street), and Yonge Street (including 19438 & 19447 Yonge Street) to the mid-point of Yonge St and Second Concession Road (including all of Samuel Lount Rd) North to the north end of Lot 109
- East to the mid-point between Leslie Street and the 2nd Concession Road on the north end of Lot 14

East:

- From the intersection of the north end of Lot 14 and the mid-point of Leslie Street and the Second Concession Road
- South crossing Mount Albert Road along the east lot line of 1086 Mount Albert Road, to the Newmarket/East Gwillimbury Town Line

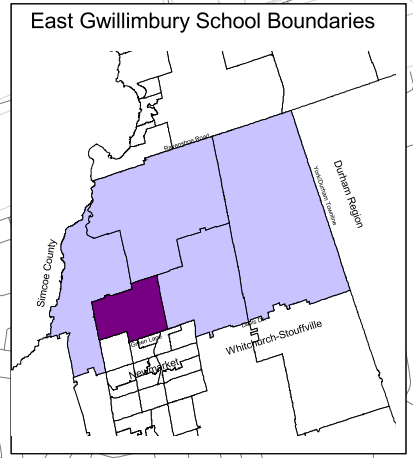
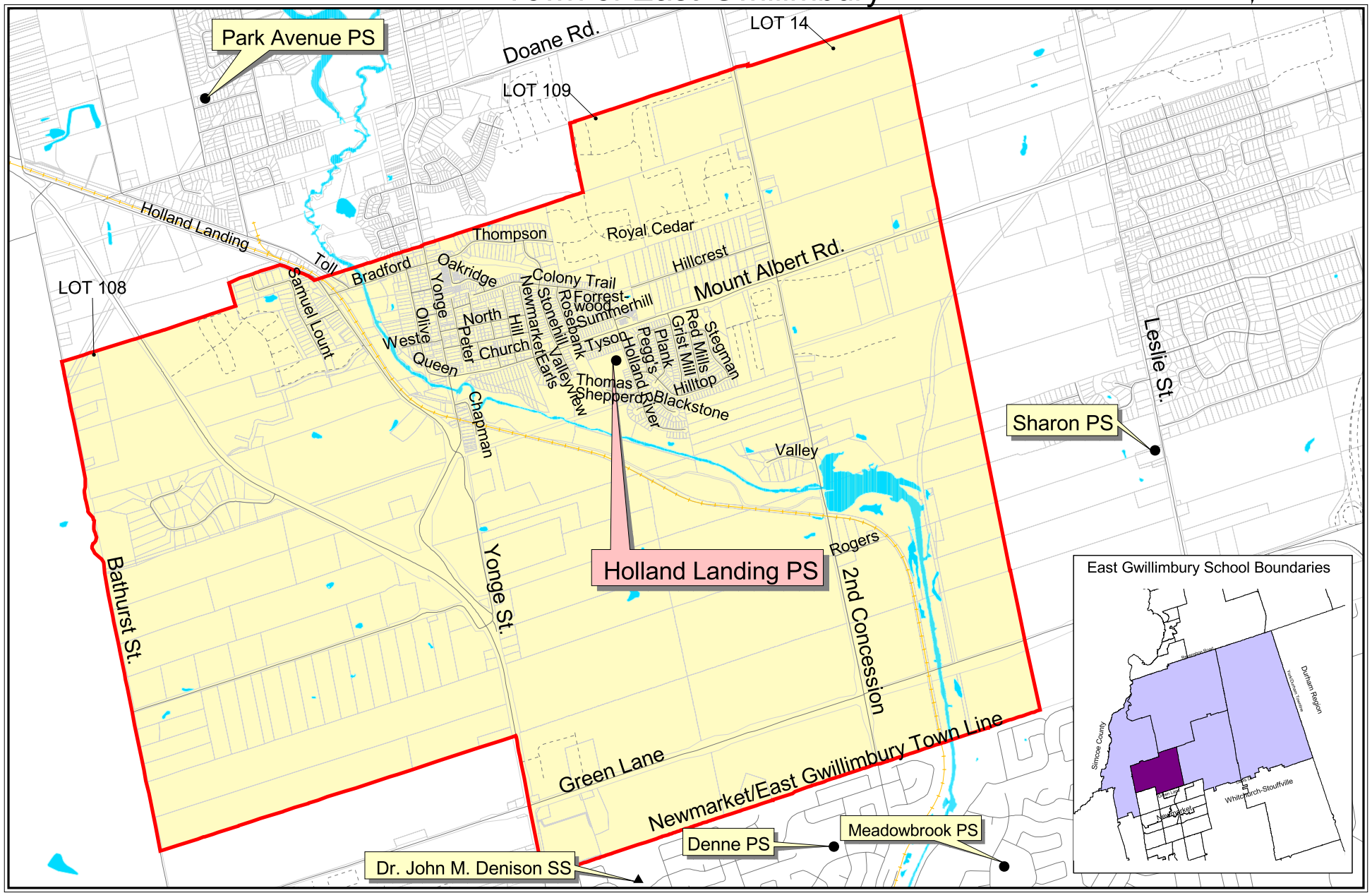
South:

- From the intersection of the mid-point of Leslie Street and the Second Concession Road and the Newmarket/East Gwillimbury Town Line
- West to the centre line of Yonge Street
- North to the back of the lots on the north side of Green Lane
- West to the centre line of Bathurst Street

West:

- From the intersection of the centre line of Bathurst Street and the back of the lots on the north side of Green Lane
- North to the north end of Lot 108 (including 19441 Bathurst Street)

Holland Landing PS Town of East-Gwillimbury



Legend					
	School Boundary		Elementary School		Roads
	Lakes		Elementary French Immersion School		Proposed Road
	Parcels		Secondary School		Rivers/Creeks
					Railway Tracks



Map updated on September 1, 2005
Date of Boundary Approval: 1997